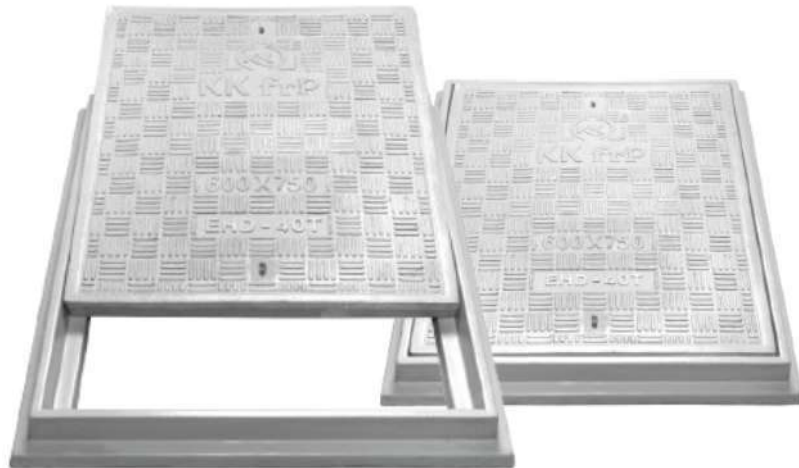


Technical Specification/ Product Datasheet



KK-FRP AND KONCRETE PRODUCTS PVT LTD

1114 Hubtown Solaris
Prof N.S Phadke Road, Andheri (E)
Mumbai-400 069
INDIA
Ph: +91 22 66913250 ,
Mob: +91 9822036550 / 9850089903 ,
email: info@kkfrp.com / kkmgnsk@gmail.com
Web: www.kkfrp.com

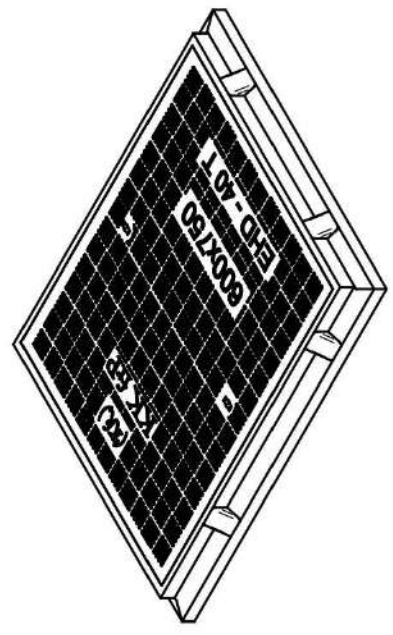
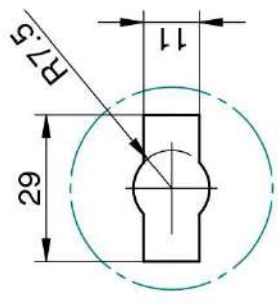
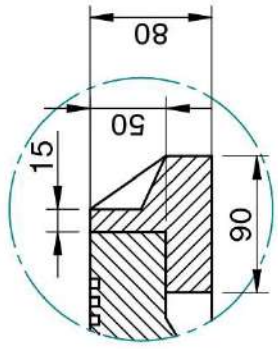
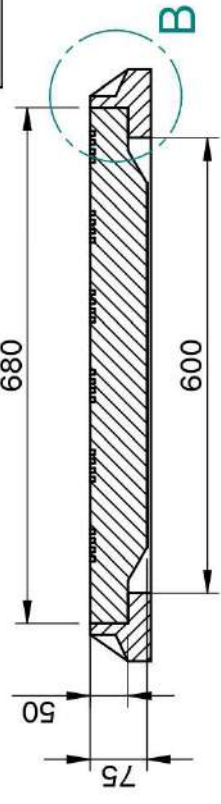
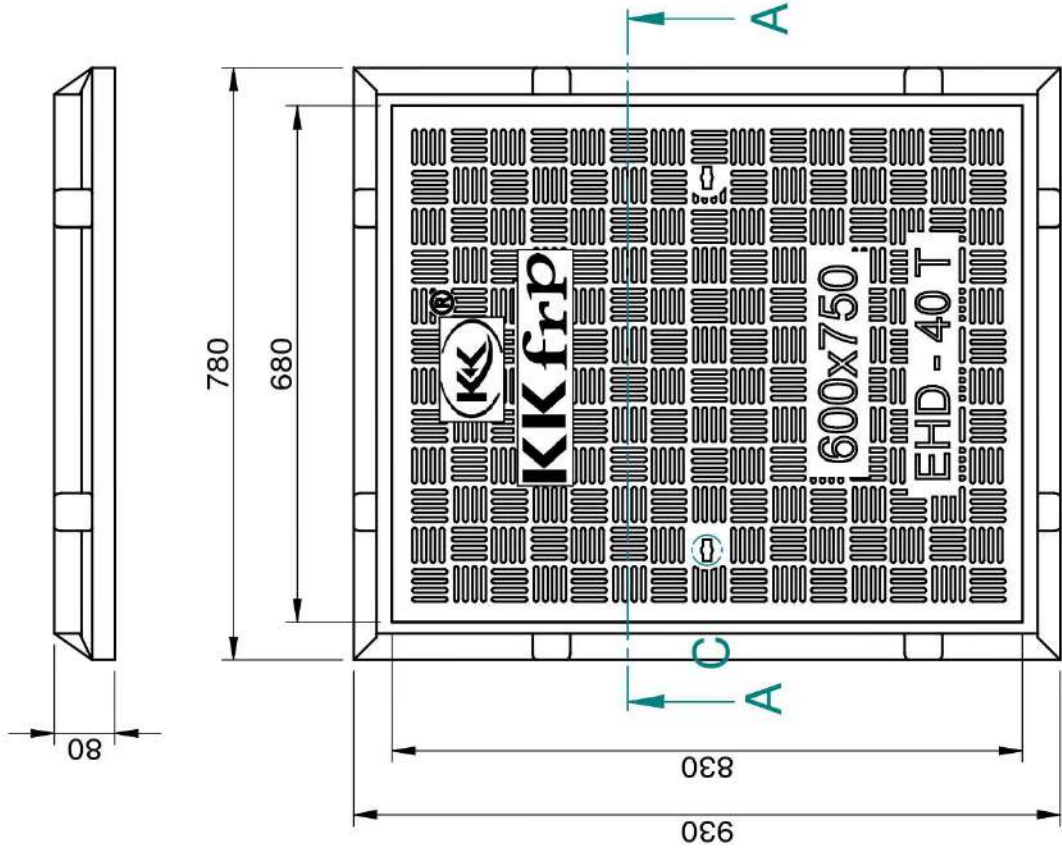


Specific Product Code/s:	MCEHD11
Product Group:	KK-FRP FIBREGLASS COMPOSITE MANHOLE COVER & FRAME
Sub-Category:	Extra Heavy Duty EHD 40 T Cap. As per BSEN124:2015
Material Composition :	Unsaturated Polyester Resin UV Resistant ISO Grade, Emulsion Fibreglass Matt E Class, Accelerators, UV Resistant Pigment, Polymer Concrete in Quartz as Core,
Basic Dimensions (mm):	Clear Opening 600 x 750 mm Cover Size: 660 x 810 mm Cover Height: 50 mm Frame Size: 780 x 930 mm Frame Height: 80 mm

Weight (kgs): Approx. 73 kg

Load Rating Classification: D400 (40T)

- Features:
- FRP Manhole Cover & Frame D400 as per BSEN124.
 - Heavy duty design to cope with the demands of heavily traffic in Main Roads , carriageways , Parkings etc.
 - Key Holes 2nos with **(SS Key optional)** & Lifting device provided .
 - Choice of Colour Available.
 - Anti skid surface.
 - Waterproof, Weatherproof, Burglar proof , Non corrossive, High Strenght to Wt ratio, Easy of handing as Light wt , Heat Resistant, Shockproof .
 - Provision for Logo of Buyer.
 - Additional Provision of Gasket (O-Ring) 6 mm Dia & SS Nut Bolts with Washer to make Water Tight **(Optional)** .



SECTION A-A

DETAIL B

**DETAIL C
KEY HOLE
FOR LIFTING**

- ① CLEAR OPENING = 750 x 600 MM
- ② OUTER FRAME SIZE = 930 x 780 x 80 MM
- ③ OUTER COVER SIZE = 830 x 680 x 50 MM
- ④ APPROX WEIGHT = 73 KG

	Drawn	RJ	Checked	AB	Scale:	1:5	Projection:	
	DESCRIPTION:				MCEHD-11	Sheet No.		2 of 2
CONFIDENTIAL INFORMATION (UNAUTHORISED DISCLOSURE PROHIBITED)				DRG. NO.		MCEHD-11-600x750 40 T		

KK frp

NOTE:-
 1. ALL DIMENSIONS ARE IN MM.
 2. DIMENSIONAL TOLERANCE +/- 1%