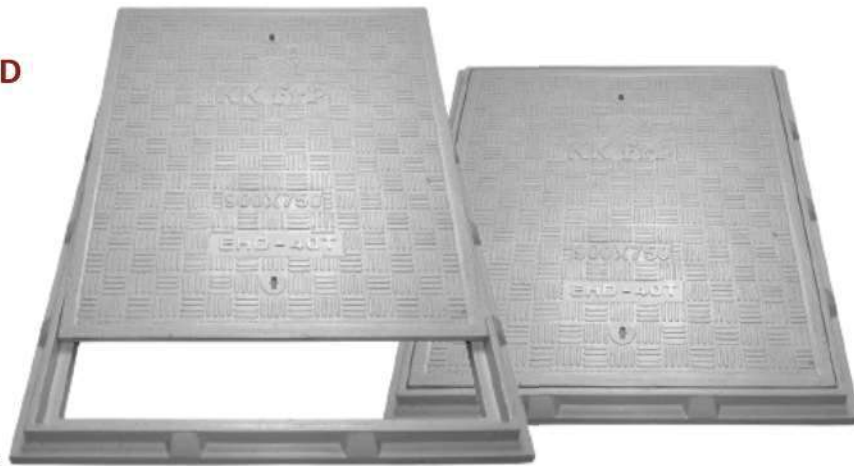


# Technical Specification/ Product Datasheet



## KK-FRP AND KONCRETE PRODUCTS PVT LTD

1114 Hubtown Solaris  
Prof N.S Phadke Road, Andheri (E)  
Mumbai-400 069  
INDIA  
Ph: +91 22 66913250 ,  
Mob: +91 9822036550 / 9850089903 ,  
email: [info@kkfrp.com](mailto:info@kkfrp.com) / [kkmgnsk@gmail.com](mailto:kkmgnsk@gmail.com)  
Web: [www.kkfrp.com](http://www.kkfrp.com)



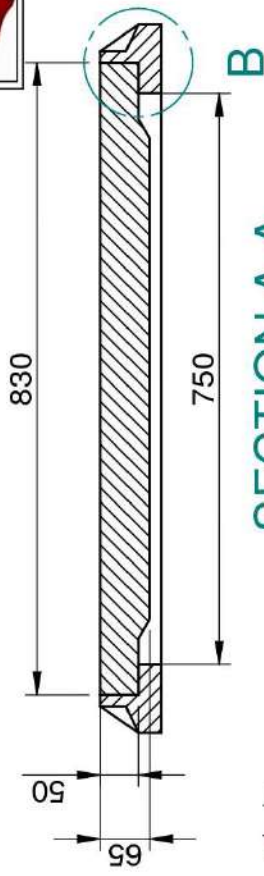
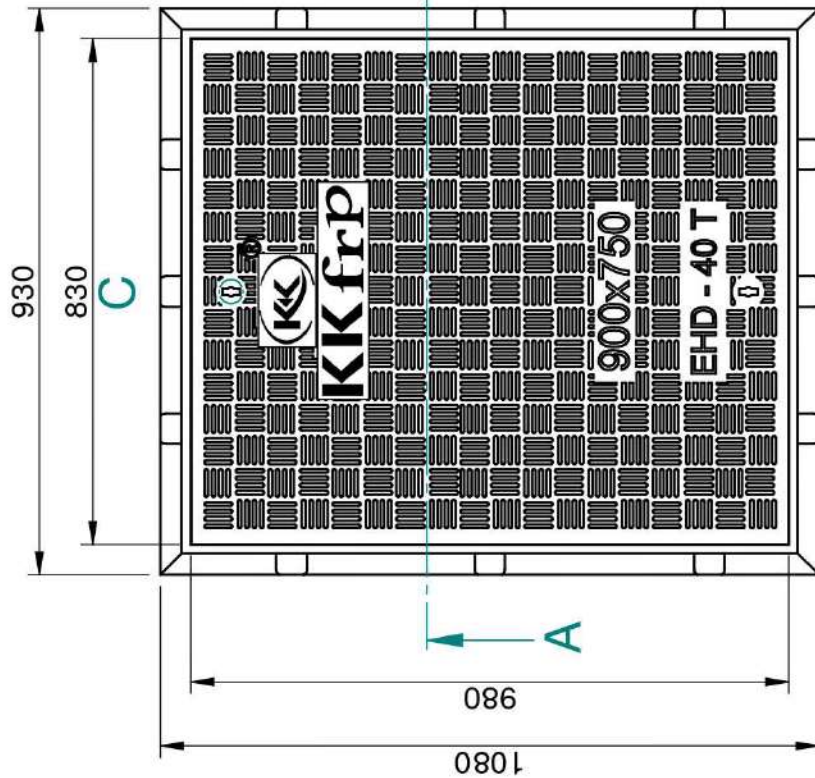
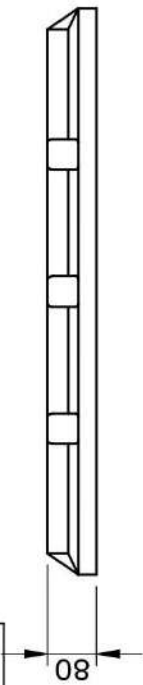
|                          |   |
|--------------------------|---|
| Specific Product Code/s: | MCEHD15   |
| Product Group:           | KK-FRP FIBREGLASS COMPOSITE MANHOLE COVER & FRAME   |
| Sub-Category:            | Extra Heavy Duty EHD 40 T Cap. As per BSEN124:2015  |
| Material Composition :   | Unsaturated Polyester Resin UV Resistant ISO Grade, Emulsion Fibreglass Matt E Class, Accelerators, UV Resistant Pigment, Polymer Concrete in Quartz as Core, |

|                        |               |               |
|------------------------|---------------|---------------|
| Basic Dimensions (mm): | Clear Opening | 900 x 750 mm  |
|                        | Cover Size:   | 960 x 810 mm  |
|                        | Cover Height: | 50 mm         |
|                        | Frame Size:   | 1080 x 930 mm |
|                        | Frame Height: | 80 mm         |

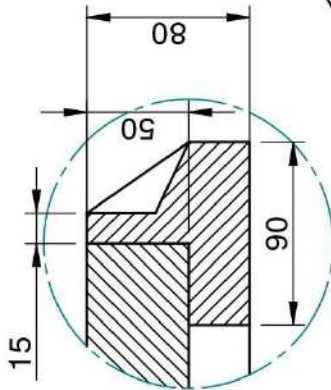
Weight (kgs): Approx. 115 kg

Load Rating Classification: D400 (40T)

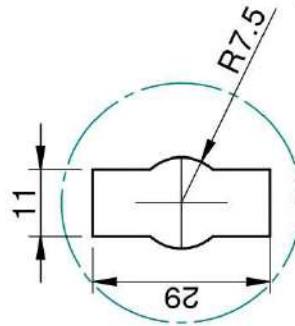
- Features:
- FRP Manhole Cover & Frame D400 as per BSEN124.
  - Heavy duty design to cope with the demands of heavily traffic in Main Roads , carriageways , Parkings etc.
  - Key Holes 2nos with **(SS Key optional)** & Lifting device provided .
  - Choice of Colour Available.
  - Anti skid surface.
  - Waterproof, Weatherproof, Burglar proof , Non corrossive, High Strenght to Wt ratio, Easy of handing as Light wt , Heat Resistant, Shockproof .
  - Provision for Logo of Buyer.
  - Additional Provision of Gasket (O-Ring) 6 mm Dia & SS Nut Bolts with Washer to make Water Tight **(Optional)** .



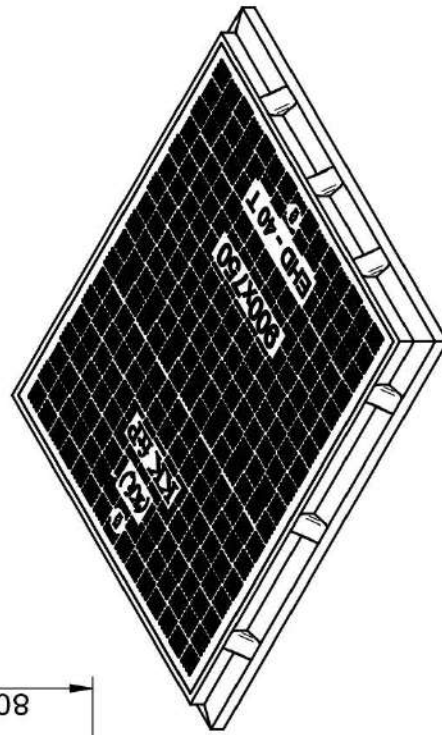
SECTION A-A



DETAIL B



DETAIL C  
KEY HOLE  
FOR LIFTING



- ① CLEAR OPENING = 900 x 750 MM
- ② OUTER FRAME SIZE = 1080 x 930 x 80 MM
- ③ OUTER COVER SIZE = 980 x 830 x 50 MM
- ④ APPROX WEIGHT = 115 KG

|  |              |    |          |    |           |     |            |                                      |                  |
|--|--------------|----|----------|----|-----------|-----|------------|--------------------------------------|------------------|
|  | Drawn        | RJ | Checked  | AB | Scale     | 1:5 | Projection |                                      |                  |
|  | DESCRIPTION: |    | MCEHD-15 |    | Sheet No. |     | 2 OF 2     |                                      |                  |
| <b>KK frp</b>  |              |    |          |    |           |     |            | DRG. NO.                             | MCEHD-15-900x750 |
| CONFIDENTIAL INFORMATION<br>(UNAUTHORISED DISCLOSURE PROHIBITED) |              |    |          |    |           |     |            | DRG. NO.<br>MCEHD-15-900x750<br>40 T |                  |

NOTE:-  
 1. ALL DIMENSIONS ARE IN MM.  
 2. DIMENSIONAL TOLERANCE +/- 1%