

# Technical Specification/ Product Datasheet

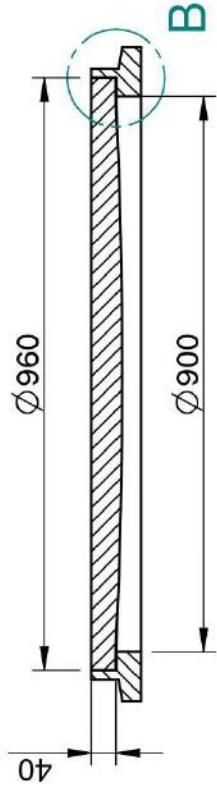
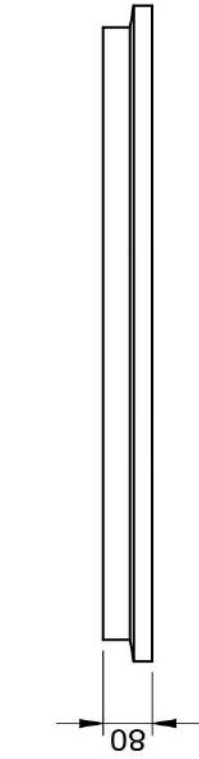


## KK-FRP AND KONCRETE PRODUCTS PVT LTD

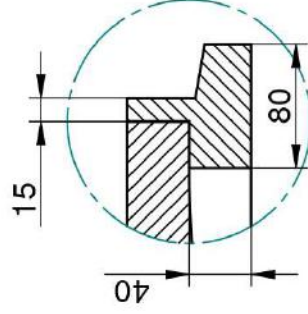
1114 Hubtown Solaris  
Prof N.S Phadke Road, Andheri (E)  
Mumbai-400 069  
INDIA  
Ph: +91 22 66913250 ,  
Mob: +91 9822036550 / 9850089903 ,  
email: [info@kkfrp.com](mailto:info@kkfrp.com) / [kkmgnsk@gmail.com](mailto:kkmgnsk@gmail.com)  
Web: [www.kkfrp.com](http://www.kkfrp.com)



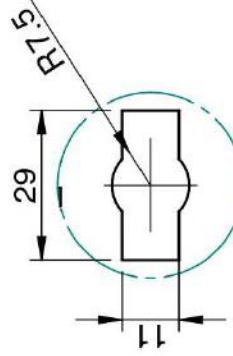
Specific Product Code/s:	MCMD05
Product Group:	KK-FRP FIBREGLASS COMPOSITE MANHOLE COVER & FRAME
Sub-Category:	Medium Duty MD 12.5 T Cap. As per BSEN124:2015
Material Composition :	Unsaturated Polyester Resin UV Resistant ISO Grade, Emulsion Fibreglass Matt E Class, Accelerators, UV Resistant Pigment, Polymer Concrete in Quartz as Core,
Basic Dimensions (mm):	Clear Opening 900 mm Dia Cover Size: 960 mm Dia Cover Height: 40 mm Frame Size: 1060 mm Dia Frame Height: 80 mm
Weight (kgs):	Approx. 81 kg
Load Rating Classification:	B125 (12.5T)
Features:	<ul style="list-style-type: none"><li>➤ FRP Manhole Cover &amp; Frame B125 as per BSEN124.</li><li>➤ Medium duty design to cope with the demands of Medium duty traffic in car parking of residential, commercial areas , Roads , carriageways, etc.</li><li>➤ Key Holes 2nos with <b>(SS Key optional)</b> &amp; Lifting device provided .</li><li>➤ Choice of Colour Available.</li><li>➤ Anti skid surface.</li><li>➤ Waterproof, Weatherproof, Burglar proof, Non corrosive, High Strength to Wt ratio, Easy of handling as Light wt , Heat Resistant, Shockproof .</li><li>➤ Provision for Logo of Buyer.</li><li>➤ Additional Provision of Gasket (O-Ring) 6 mm Dia &amp; SS Nut Bolts</li></ul>



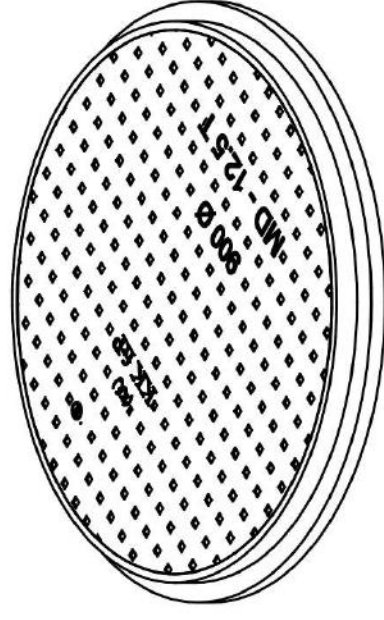
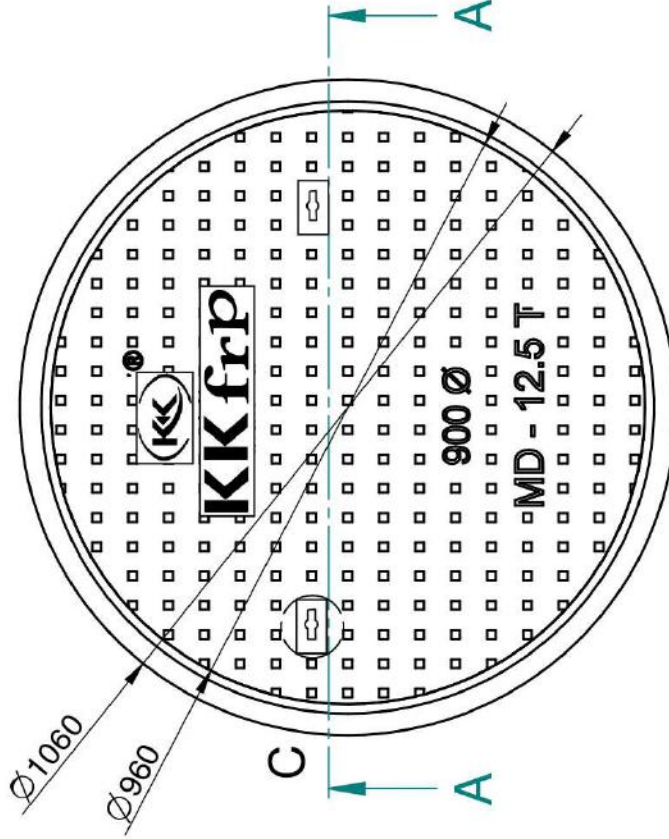
## SECTION A-A



## DETAIL B



## DETAIL C KEY HOLE FOR LIFTING



- 1 CLEAR OPENING = Ø 900 MM
- 2 OUTER FRAME SIZE = Ø 1060 MM
- 3 OUTER COVER SIZE = Ø 960 MM
- 4 APPROX WEIGHT = 81 KG

### NOTE:-

1. ALL DIMENSIONS ARE IN MM.
2. DIMENSIONAL TOLERANCE +/- 1%

	Drawn <b>RJ</b>	Chd <b>AB</b>	SCALE: <b>1:5</b>	Projection: 
DESCRIPTION: <b>MCMD-05</b>				Sheet No. <b>2 of 2</b>
CONFIDENTIAL INFORMATION (UNAUTHORISED DISCLOSURE PROHIBITED)				DRG.NO. <b>MCMD-05 DIA 900 12.5 T</b>

# KK frp