

Technical Specification/ Product Datasheet



KK-FRP AND KONCRETE PRODUCTS PVT LTD

1114 Hubtown Solaris
Prof N.S Phadke Road, Andheri (E)
Mumbai-400 069
INDIA
Ph: +91 22 66913250 ,
Mob: +91 9822036550 / 9850089903 ,
email: info@kkfrp.com / kkmgnsk@gmail.com
Web: www.kkfrp.com



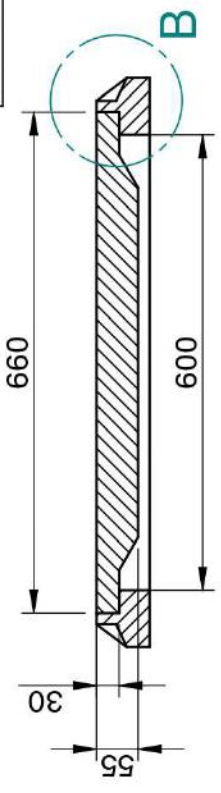
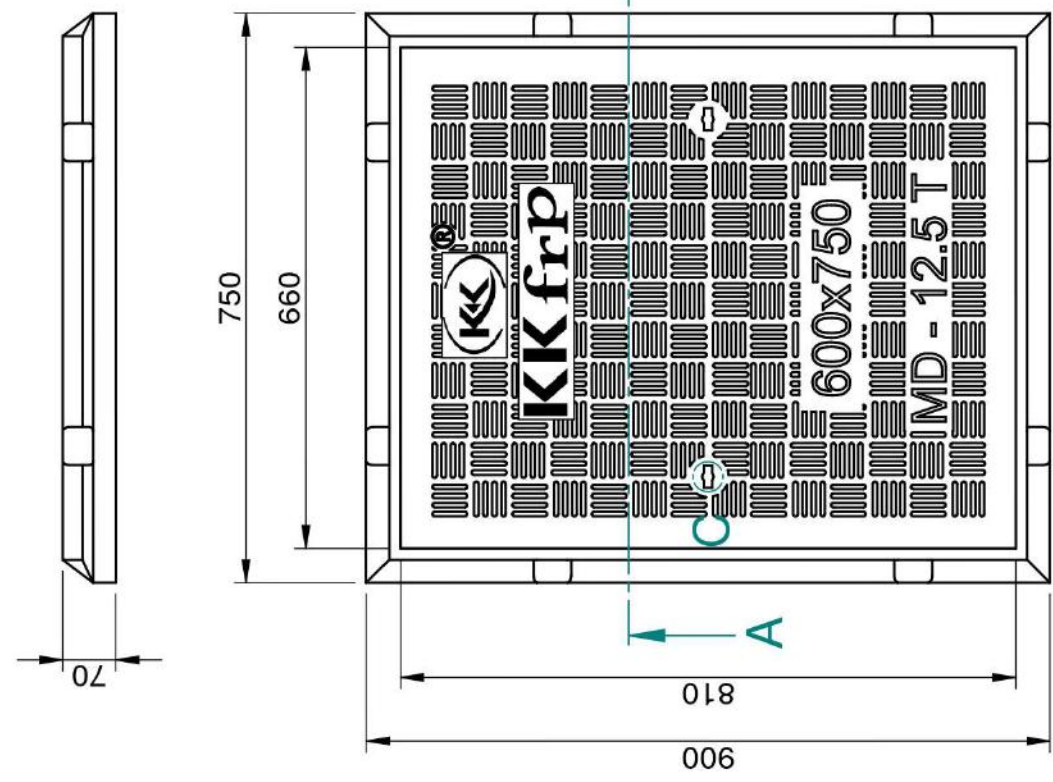
| | |
|--------------------------|---|
| Specific Product Code/s: | MCMD11 |
| Product Group: | KK-FRP FIBREGLASS COMPOSITE MANHOLE COVER & FRAME |
| Sub-Category: | Medium Duty MD 12.5 T Cap. As per BSEN124:2015 |
| Material Composition : | Unsaturated Polyester Resin UV Resistant ISO Grade, Emulsion Fibreglass Matt E Class, Accelerators, UV Resistant Pigment, Polymer Concrete in Quartz as Core, |

| | | |
|------------------------|---------------|--------------|
| Basic Dimensions (mm): | Clear Opening | 600 x 750 mm |
| | Cover Size: | 660 x 810 mm |
| | Cover Height: | 30 mm |
| | Frame Size: | 730 x 880 mm |
| | Frame Height: | 60 mm |

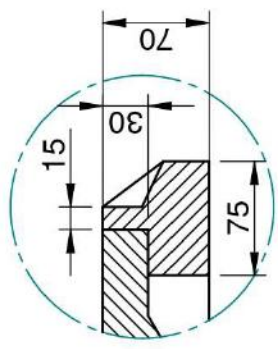
Weight (kgs): Approx. 53 kg

Load Rating Classification: B125 (12.5T)

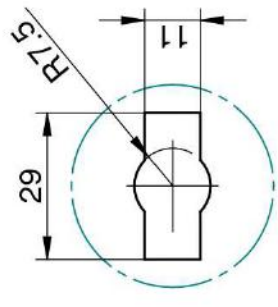
- Features:
- FRP Manhole Cover & Frame B125 as per BSEN124.
 - Medium duty design to cope with the demands of Medium duty traffic in car parking of residential, commercial areas , Roads , carriageways, etc.
 - Key Holes 2nos with **(SS Key optional)** & Lifting device provided .
 - Choice of Colour Available.
 - Anti skid surface.
 - Waterproof, Weatherproof, Burglar proof, Non corrosive, High Strength to Wt ratio, Easy of handing as Light wt , Heat Resistant, Shockproof .
 - Provision for Logo of Buyer.
 - Additional Provision of Gasket (O-Ring) 6 mm Dia & SS Nut Bolts



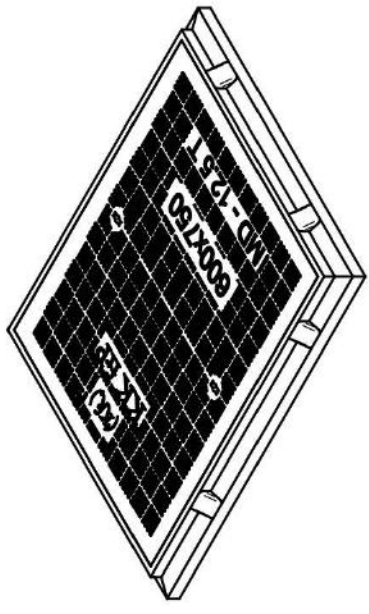
SECTION A-A



DETAIL B



DETAIL C
KEY HOLE
FOR LIFTING



- ① CLEAR OPENING = 750 x 600 MM
- ② OUTER FRAME SIZE = 900 x 750 x 70 MM
- ③ OUTER COVER SIZE = 810 x 660 x 30 MM
- ④ APPROX WEIGHT = 55 KG

| | | | | | | | | |
|--|--------------|-----------|---------|--------|----------|-----|-----------------|--|
| | Drawn | RJ | Checked | AB | Scale: | 1:5 | Projection: | |
| | DESCRIPTION: | | MCMD-11 | | DRG. NO. | | MCMD-11-600x750 | |
| | | Sheet No. | | 2 of 2 | | | | |

CONFIDENTIAL INFORMATION
(UNAUTHORISED DISCLOSURE PROHIBITED)

KK frp

NOTE:-
1. ALL DIMENSIONS ARE IN MM.
2. DIMENSIONAL TOLERANCE +/- 1%