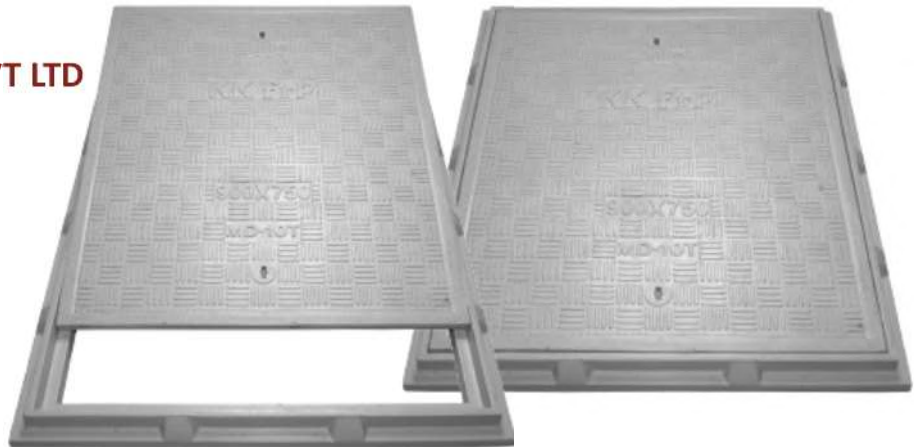


# Technical Specification/ Product Datasheet

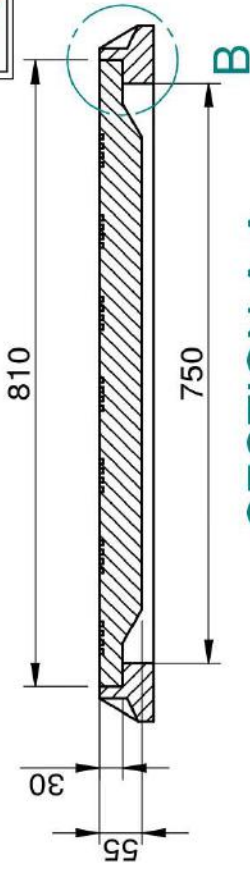
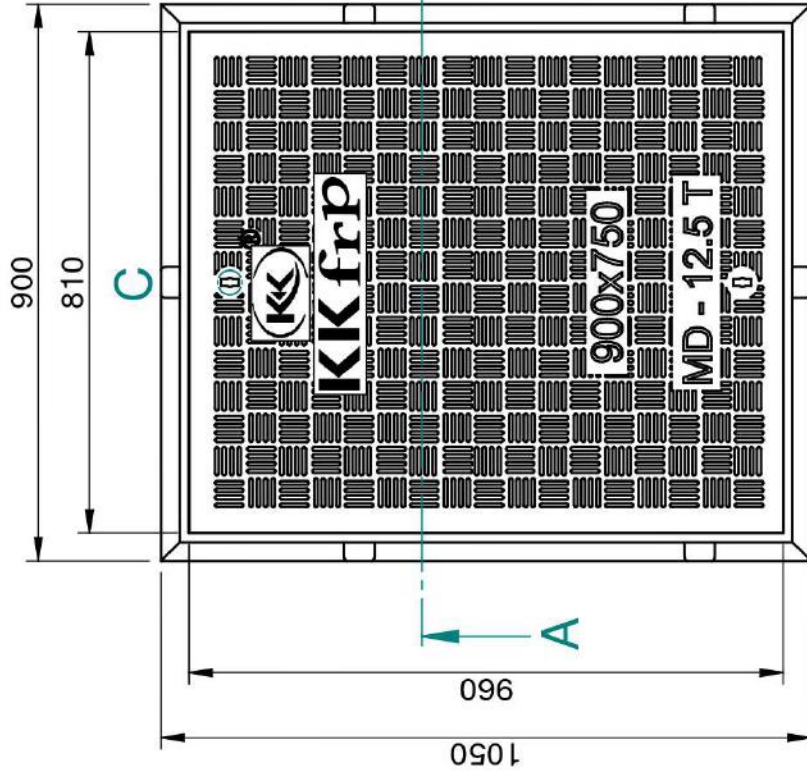
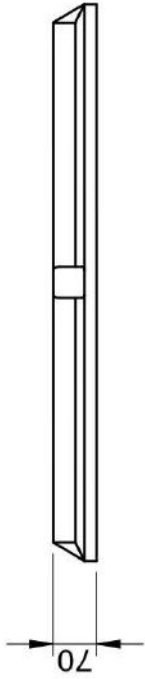


## KK-FRP AND KONCRETE PRODUCTS PVT LTD

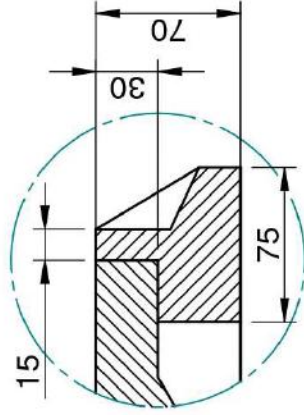
1114 Hubtown Solaris  
Prof N.S Phadke Road, Andheri (E)  
Mumbai-400 069  
INDIA  
Ph: +91 22 66913250 ,  
Mob: +91 9822036550 / 9850089903 ,  
email: [info@kkfrp.com](mailto:info@kkfrp.com) / [kkmgnsk@gmail.com](mailto:kkmgnsk@gmail.com)  
Web: [www.kkfrp.com](http://www.kkfrp.com)



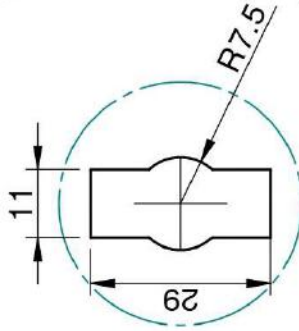
Specific Product Code/s:	MCMD15
Product Group:	KK-FRP FIBREGLASS COMPOSITE MANHOLE COVER & FRAME
Sub-Category:	Medium Duty MD 12.5 T Cap. As per BSEN124:2015
Material Composition :	Unsaturated Polyester Resin UV Resistant ISO Grade, Emulsion Fibreglass Matt E Class, Accelerators, UV Resistant Pigment, Polymer Concrete in Quartz as Core,
Basic Dimensions (mm):	Clear Opening 900 x 750 mm Cover Size: 960 x 810 mm Cover Height: 30 mm Frame Size: 1030 x 880 mm Frame Height: 60 mm
Weight (kgs):	Approx. 75 kg
Load Rating Classification:	B125 (12.5T)
Features:	<ul style="list-style-type: none"><li>➤ FRP Manhole Cover &amp; Frame B125 as per BSEN124.</li><li>➤ Medium duty design to cope with the demands of Medium duty traffic in car parking of residential, commercial areas , Roads , carriageways, etc.</li><li>➤ Key Holes 2nos with <b>(SS Key optional)</b> &amp; Lifting device provided .</li><li>➤ Choice of Colour Available.</li><li>➤ Anti skid surface.</li><li>➤ Waterproof, Weatherproof, Burglar proof, Non corrosive, High Strength to Wt ratio, Easy of handing as Light wt , Heat Resistant, Shockproof .</li><li>➤ Provision for Logo of Buyer.</li><li>➤ Additional Provision of Gasket (O-Ring) 6 mm Dia &amp; SS Nut Bolts</li></ul>



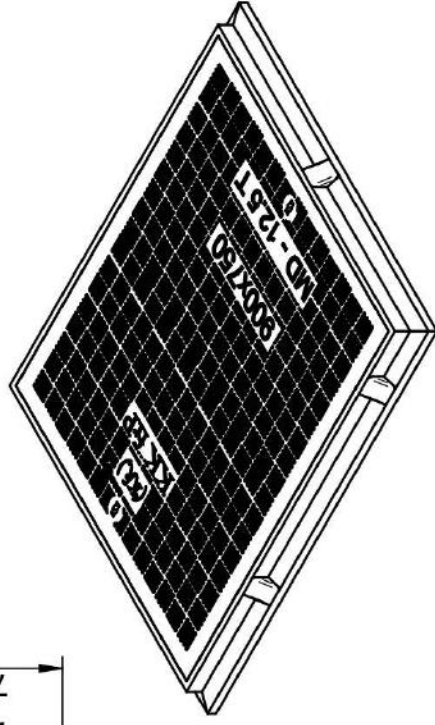
**SECTION A-A**



**DETAIL B**



**DETAIL C  
KEY HOLE  
FOR LIFTING**



- ① CLEAR OPENING = 900 x 750 MM
- ② OUTER FRAME SIZE = 1050 x 900 x 70 MM
- ③ OUTER COVER SIZE = 960 x 810 x 30 MM
- ④ APPROX WEIGHT = 80 KG

	Drawn	RJ	Checked	AB	Scale	1:5	
	DESCRIPTION: MCMD-15		Sheet No. 2 of 2		DRG. NO. MCMD-15-900x750		

**NOTE:-**  
1. ALL DIMENSIONS ARE IN MM.  
2. DIMENSIONAL TOLERANCE +/- 1%

CONFIDENTIAL INFORMATION  
(UNAUTHORISED DISCLOSURE PROHIBITED)

