

Technical Specification/ Product Datasheet



KK-FRP AND KONCRETE PRODUCTS PVT LTD

1114 Hubtown Solaris
 Prof N.S Phadke Road, Andheri (E)
 Mumbai-400 069
 INDIA
 Ph: +91 22 66913250 ,
 Mob: +91 9822036550 / 9850089903 ,
 email: info@kkfrp.com / kkmgnsk@gmail.com
 Web: www.kkfrp.com



Specific Product Code/s:	MHCF41
Product Group:	KK SFRC CONCRETE MANHOLE COVER & FRAME
Sub-Category:	Light Duty LD 2.5T Cap. As per IS:12592:2002
Material Composition :	Ordinary Portland Cement 53 Grade. Reinforcement 6 TMT. Bars Fe 500 Grade, MS Sheet at edges 1.30 mm thick.
Concrete Grade :	M40
Water Cement Ratio:	0.35
Basic Dimensions (mm):	Clear Opening 600 x 450 mm Cover Size: 660 x 520 mm Cover Height: 37 mm Frame Size: 780 x 610 mm Frame Height: 80 mm
Weight (kgs):	Approx. 70 kgs
Load Rating Classification:	LD 2.5T

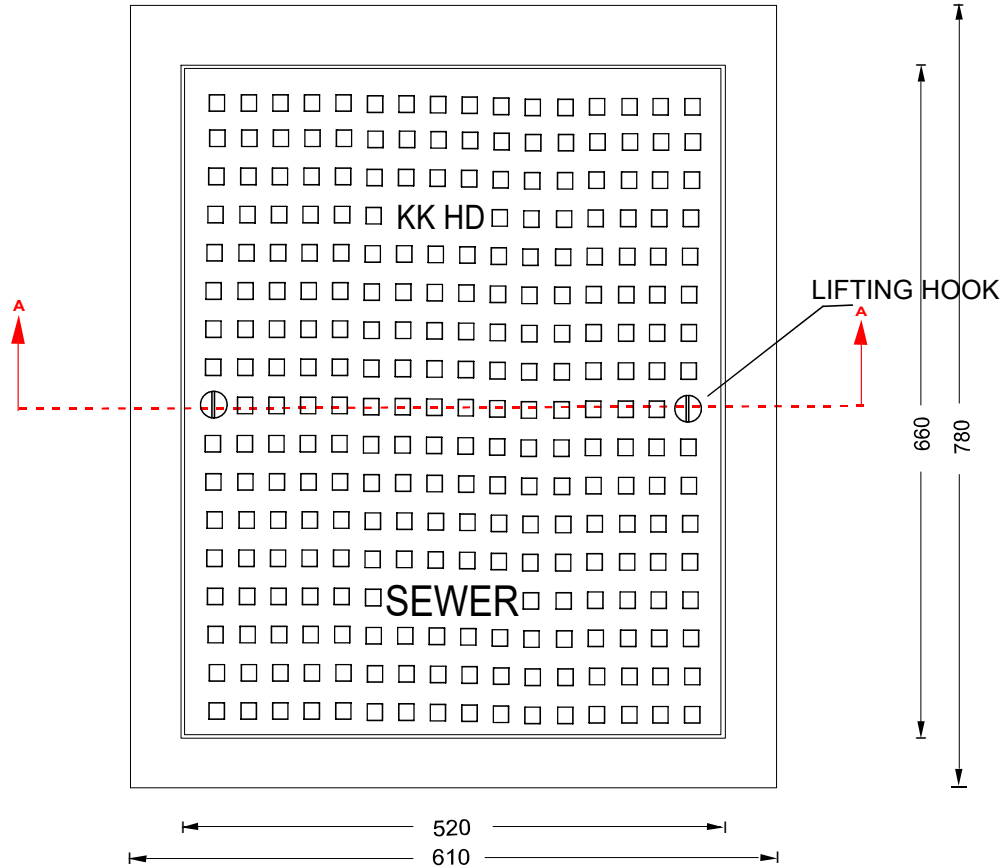
Features:

- SFRC Concrete Manhole Cover & Frame LD 2.5T as per IS:12592:2002.
- Light duty design to cope with the demands of Light duty traffic in foot paths, cycle tracks, car parking of residential areas etc
- 2 Nos Lifting Hooks 8 mm Dia TMT Bar .
- Choice of Colour Available.
- Anti skid surface.
- Waterproof, Weatherproof, Burglar proof, Non corrosive, High Strength to Wt ratio , Heat Resistant, Shockproof .

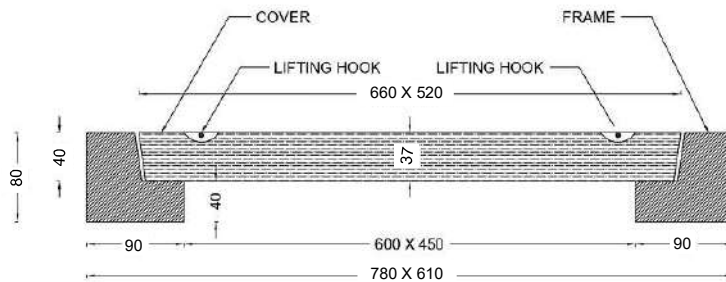


DETAILED DRAWING

KK SFRC CONCRETE MANHOLE COVER AND FRAME CLEAR OPENING 600 X 450 MM CAP 2.5T



PLAN



DETAILED SECTION AA

KK-FRP AND CONCRETE PRODUCTS PVT LTD
 TECHNICAL SPECIFICATION:
 LIGHT DUTY RECTANGULAR
 SFRC CONCRETE MANHOLE COVER AND FRAME LD 2.5T
 CLEAR OPENING: 600 X 450 MM
 COVER SIZE: 660 X 520 X 37 MM
 FRAME SIZE : 780 X 610 X 80 MM
 WEIGHT PER SET 70 KGS.
 LOAD CAPACITY AS PER IS:12592-2002 2.5T
 (ALL DIMENSIONS ARE IN MM)
 DIMENSIONAL TOLERANCE +5MM