

# Technical Specification/ Product Datasheet

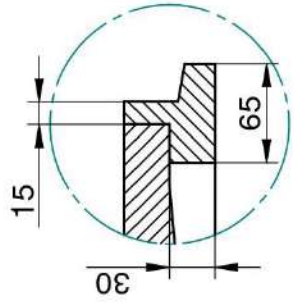
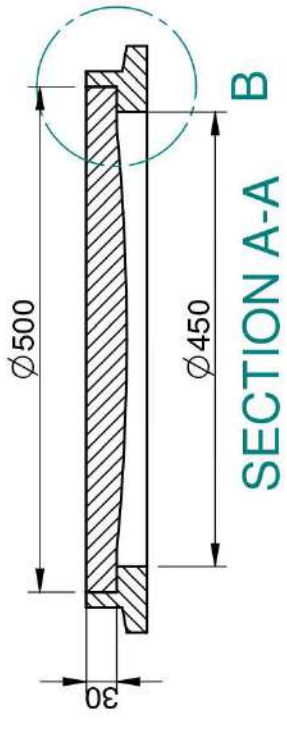


## KK-FRP AND KONCRETE PRODUCTS PVT LTD

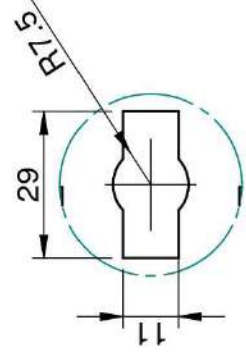
1114 Hubtown Solaris  
Prof N.S Phadke Road, Andheri (E)  
Mumbai-400 069  
INDIA  
Ph: +91 22 66913250 ,  
Mob: +91 9822036550 / 9850089903 ,  
email: [info@kkfrp.com](mailto:info@kkfrp.com) / [kkmgnsk@gmail.com](mailto:kkmgnsk@gmail.com)  
Web: [www.kkfrp.com](http://www.kkfrp.com)



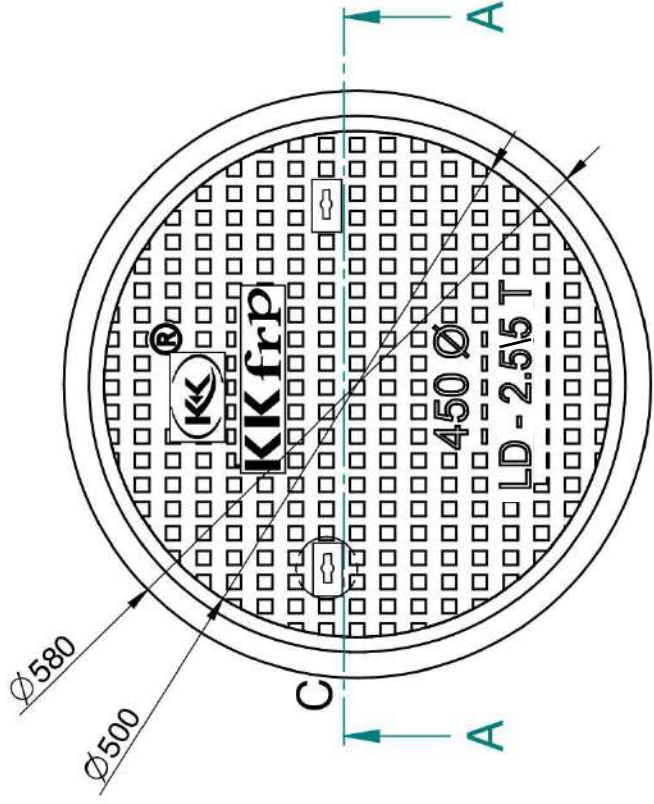
Specific Product Code/s:	MCLD01
Product Group:	KK-FRP FIBREGLASS COMPOSITE MANHOLE COVER & FRAME
Sub-Category:	Light Duty LD 2.5/5 T Cap. As per BSEN124:2015
Material Composition :	Unsaturated Polyester Resin UV Resistant ISO Grade, Emulsion Fibreglass Matt E Class, Accelerators, UV Resistant Pigment, Polymer Concrete in Quartz as Core,
Basic Dimensions (mm):	Clear Opening 450 mm Dia Cover Size: 500 mm Dia Cover Height: 30 mm Frame Size: 580 mm Dia Frame Height: 60 mm
Weight (kgs):	Approx. 22 kg
Load Rating Classification:	LD-2.5/5T
Features:	<ul style="list-style-type: none"><li>➤ FRP Manhole Cover &amp; Frame LD-2.5/5T as per BSEN124.</li><li>➤ Light duty design to cope with the demands of Light duty traffic in foot paths ,cycle tracks ,car parking of residential areas etc.</li><li>➤ Key Holes 2nos with <b>(SS Key optional)</b> &amp; Lifting device provided .</li><li>➤ Choice of Colour Available.</li><li>➤ Anti skid surface.</li><li>➤ Waterproof, Weatherproof, Burglar proof, Non corrosive, High Strength to Wt ratio, Easy of handling as Light wt , Heat Resistant, Shockproof .</li><li>➤ Provision for Logo of Buyer.</li><li>➤ Additional Provision of Gasket (O-Ring) 6 mm Dia &amp; SS Nut Bolts with Washer to make Water Tight <b>(Optional)</b> .</li></ul>



**DETAIL B**



**DETAIL C  
KEY HOLE  
FOR LIFTING**



- ① CLEAR OPENING = Ø 450 MM
- ② OUTER FRAME SIZE = Ø 580 MM
- ③ OUTER COVER SIZE = Ø 500 MM
- ④ APPROX WEIGHT = 22 KG

	Drawn	RJ	Checked	AB	Scale:	1:5	Projection:	
	DESCRIPTION:		MCLD-01		Sheet No.		2 of 2	
DRG. NO.		MCLD-01 DIA 450 2.5 T						

**NOTE:-**  
 1. ALL DIMENSIONS ARE IN MM.  
 2. DIMENSIONAL TOLERANCE +/- 1%

CONFIDENTIAL INFORMATION  
 (UNAUTHORISED DISCLOSURE PROHIBITED)

