

Technical Specification/ Product Datasheet

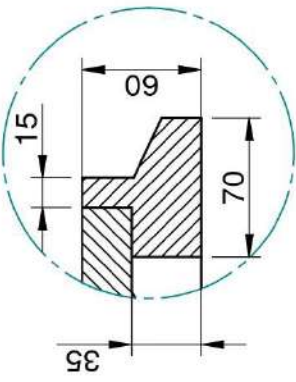
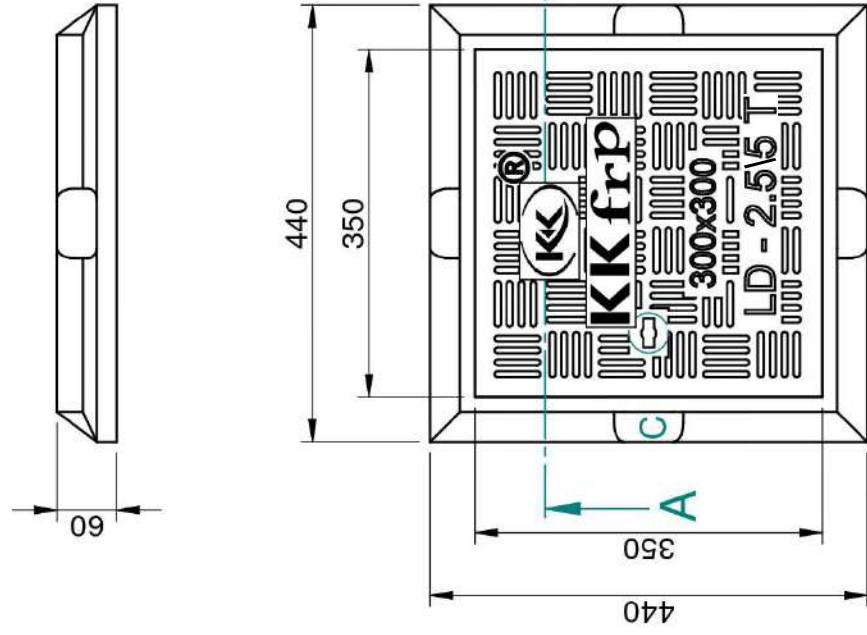


KK-FRP AND KONCRETE PRODUCTS PVT LTD

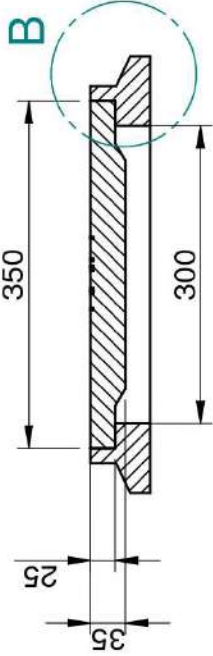
1114 Hubtown Solaris
Prof N.S Phadke Road, Andheri (E)
Mumbai-400 069
INDIA
Ph: +91 22 66913250 ,
Mob: +91 9822036550 / 9850089903 ,
email: info@kkfrp.com / kkmngsk@gmail.com
Web: www.kkfrp.com



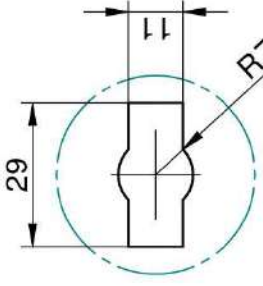
Specific Product Code/s:	MCLD07
Product Group:	KK-FRP FIBREGLASS COMPOSITE MANHOLE COVER & FRAME
Sub-Category:	Light Duty LD-2.5/5T Cap. As per BSEN124:2015
Material Composition :	Unsaturated Polyester Resin UV Resistant ISO Grade, Emulsion Fibreglass Matt E Class, Accelerators, UV Resistant Pigment, Polymer Concrete in Quartz as Core,
Basic Dimensions (mm):	Clear Opening 300 x 300 mm Cover Size: 350 x 350 mm Cover Height: 25 mm Frame Size: 440 x 440 mm Frame Height: 60 mm
Weight (kgs):	Approx. 13kg
Load Rating Classification:	LD-2.5/ 5T
Features:	<ul style="list-style-type: none">➤ FRP Manhole Cover & Frame LD-2.5/5T as per BSEN124.➤ Light duty design to cope with the demands of Light duty traffic in foot paths ,cycle tracks ,car parking of residential areas etc.➤ Key Holes 1nos with (SS Key optional) & Lifting device provided .➤ Choice of Colour Available.➤ Anti skid surface.➤ Waterproof, Weatherproof, Burglar proof, Non corrosive, High Strength to Wt ratio, Easy of handing as Light wt , Heat Resistant, Shockproof .➤ Provision for Logo of Buyer.➤ Additional Provision of Gasket (O-Ring) 6 mm Dia & SS Nut Bolts



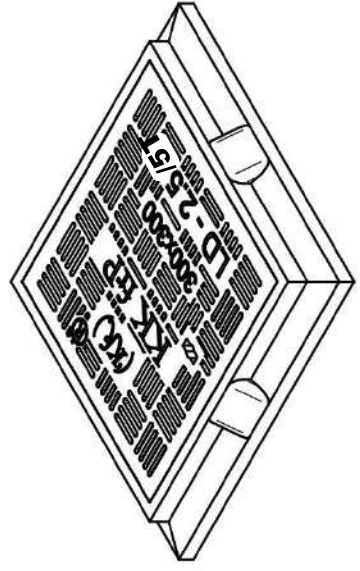
DETAIL B



SECTION A-A



**DETAIL C
KEY HOLE
FOR LIFTING**



- ① CLEAR OPENING = 300 X 300 MM
- ② OUTER FRAME SIZE = 440 X 440 X 60 MM
- ③ OUTER COVER SIZE = 350 X 350 X 25 MM
- ④ APPROX WEIGHT = 13 KG

	Drawn	RJ	Ched	AB	Scale:	1:5	Projection:		
	DESCRIPTION:		MCLD-07		Sheet No.		2 OF 2		
KK frp								DRG. NO. MCLD-07-300x300 LD 2.5 T	

NOTE:-
 1. ALL DIMENSIONS ARE IN MM.
 2. DIMENSIONAL TOLERANCE +/- 1%

CONFIDENTIAL INFORMATION
 (UNAUTHORISED DISCLOSURE PROHIBITED)

ALL DIMENSIONS ARE IN MM