

Technical Specification/ Product Datasheet



KK-FRP AND KONCRETE PRODUCTS PVT LTD

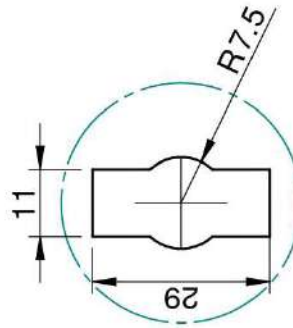
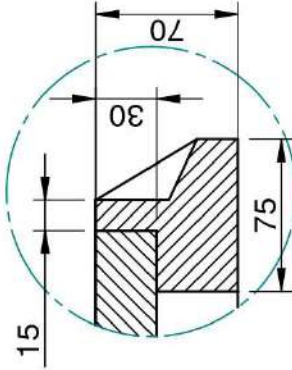
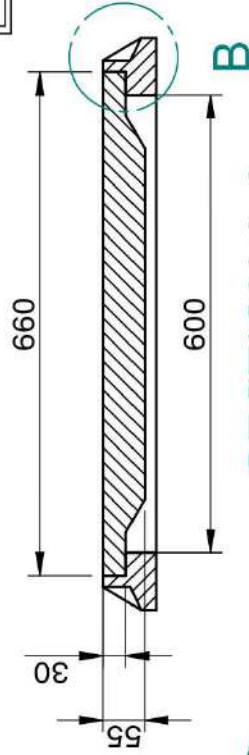
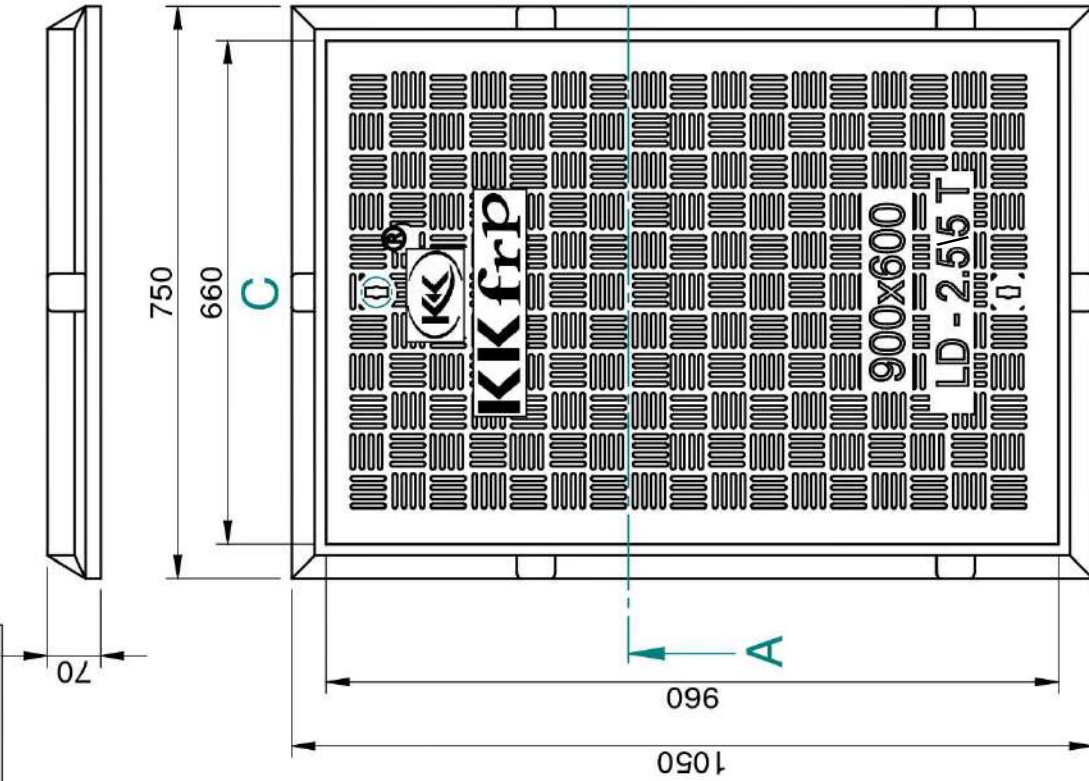
1114 Hubtown Solaris
Prof N.S Phadke Road, Andheri (E)
Mumbai-400 069
INDIA
Ph: +91 22 66913250 ,
Mob: +91 9822036550 / 9850089903 ,
email: info@kkfrp.com / kkmgnsk@gmail.com
Web: www.kkfrp.com



Specific Product Code/s:	MCLD14
Product Group:	KK-FRP FIBREGLASS COMPOSITE MANHOLE COVER & FRAME
Sub-Category:	Light Duty LD 2.5/5T Cap. As per BSEN124:2015
Material Composition :	Unsaturated Polyester Resin UV Resistant ISO Grade, Emulsion Fibreglass Matt E Class, Accelerators, UV Resistant Pigment, Polymer Concrete in Quartz as Core,
Basic Dimensions (mm):	Clear Opening 900 x 600 mm Cover Size: 960 x 660 mm Cover Height: 30 mm Frame Size: 1050 x 750 mm Frame Height: 70 mm
Weight (kgs):	Approx. 63 kg
Load Rating Classification:	LD-2.5/5T

Features:

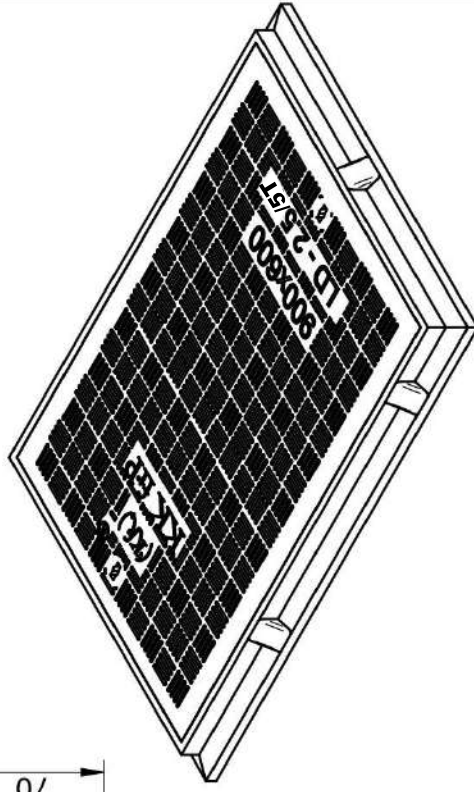
- FRP Manhole Cover & Frame LD-2.5/5T as per BSEN124.
- Light duty design to cope with the demands of Light duty traffic in foot paths ,cycle tracks ,car parking of residential areas etc.
- Key Holes 2nos with **(SS Key optional)** & Lifting device provided .
- Choice of Colour Available.
- Anti skid surface.
- Waterproof, Weatherproof, Burglar proof, Non corrosive, High Strenght to Wt ratio, Easy of handing as Light wt , Heat Resistant, Shockproof .
- Provision for Logo of Buyer.
- Additional Provision of Gasket (O-Ring) 6 mm Dia & SS Nut Bolts with Washer to make Water Tight **(Optional)** .



SECTION A-A

DETAIL B

**DETAIL C
KEY HOLE
FOR LIFTING**



- ① CLEAR OPENING = 900 x 600 MM
- ② OUTER FRAME SIZE = 1050 x 750 x 70 MM
- ③ OUTER COVER SIZE = 960 x 660 x 30 MM
- ④ APPROX WEIGHT = 63 KG

	Drawn	RJ	Checked	AB	Scale	1:5	Projection	
	DESCRIPTION:				MCLD-14	Sheet No.		2 OF 2
CONFIDENTIAL INFORMATION (UNAUTHORISED DISCLOSURE PROHIBITED)				DRG. NO.		MCLD-14-900x600 2.5T		

NOTE:-

- 1. ALL DIMENSIONS ARE IN MM.
- 2. DIMENSIONAL TOLERANCE +/- 1%