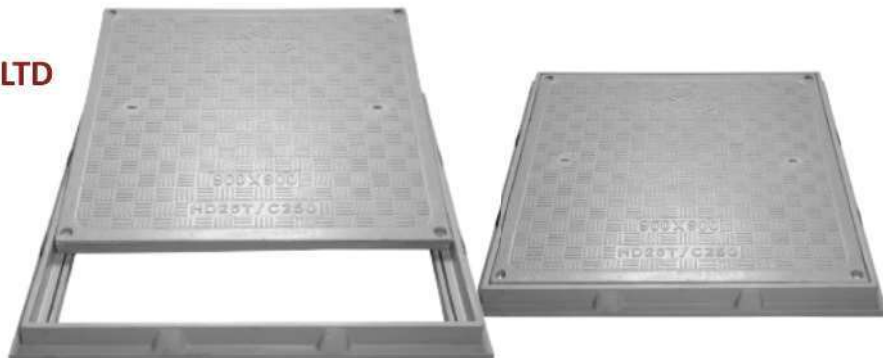


Technical Specification/ Product Datasheet



KK-FRP AND KONCRETE PRODUCTS PVT LTD

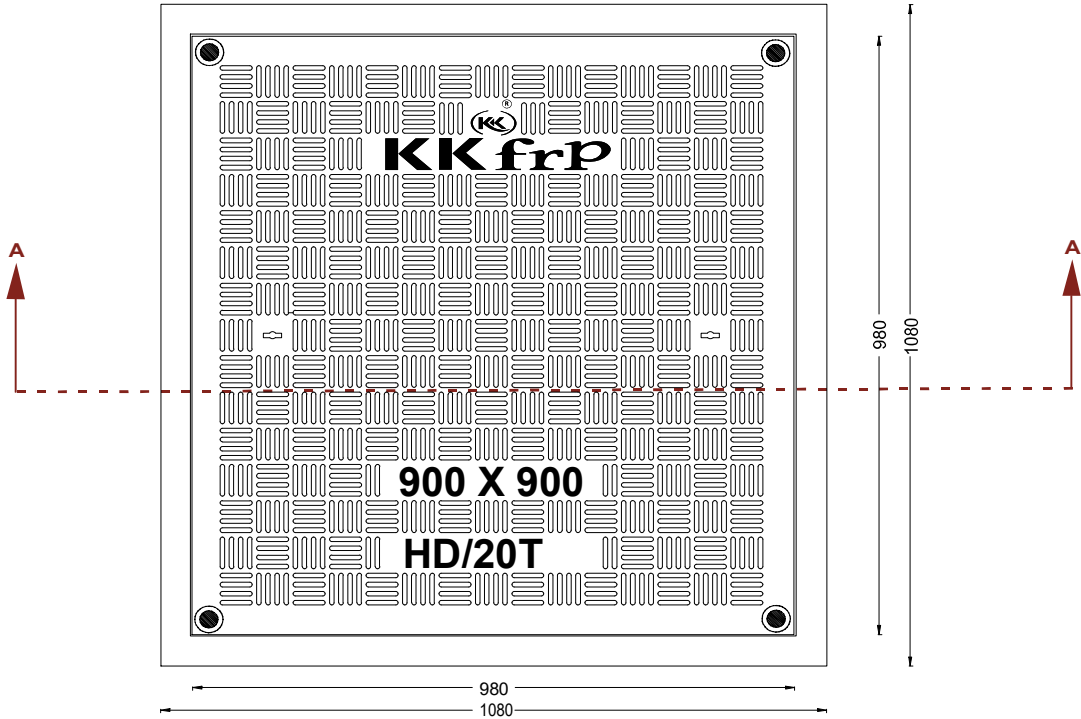
1114 Hubtown Solaris
Prof N.S Phadke Road, Andheri (E)
Mumbai-400 069
INDIA
Ph: +91 22 66913250 ,
Mob: +91 9822036550 / 9850089903 ,
email: info@kkfrp.com / kkmgnsk@gmail.com
Web: www.kkfrp.com



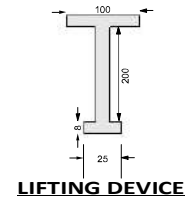
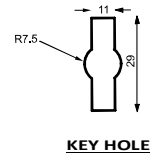
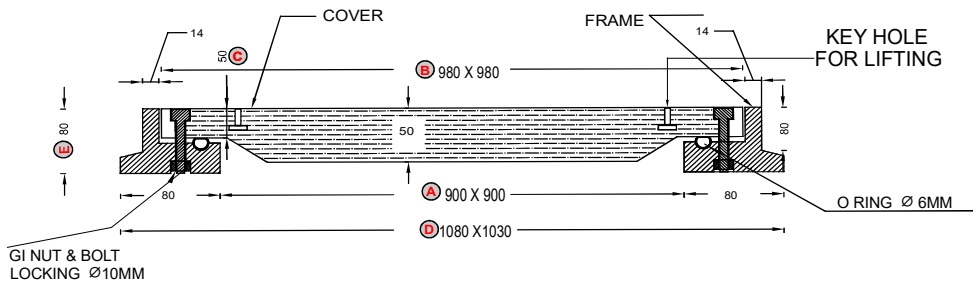
Specific Product Code/s:	WTCF HD-08 Water & Air Tight Tank Covers & Frames
Product Group:	KK-FRP FIBREGLASS COMPOSITE MANHOLE COVER & FRAME
Sub-Category:	Heavy Duty HD 20T Cap. As per BSEN124:2015
Material Composition :	Unsaturated Polyester Resin UV Resistant ISO Grade, Emulsion Fibreglass Matt E Class, Accelerators, UV Resistant Pigment, Polymer Concrete in Quartz as Core,
Basic Dimensions (mm):	Clear Opening 900X900 mm Cover Size: 980X980 mm Cover Height: 50 mm Frame Size: 1080X1080 mm Frame Height: 80mm
Weight (kgs):	Approx. 140kg
Load Rating Classification:	HD (20T)
Features:	<ul style="list-style-type: none">➤ FRP Manhole Cover & Frame HD as per BSEN124.➤ Heavy duty design to cope with the demands of Heavy duty traffic in car parking of residential, commercial areas , Roads , carriageways, etc.➤ Key Holes 2nos with (SS Key optional) & Lifting device provided .➤ Choice of Colour Available.➤ Anti skid surface.➤ Waterproof, Weatherproof, Burglar proof, Non corrosive, High Strength to Wt ratio, Easy of handing as Light wt , Heat Resistant, Shockproof .➤ Provision for Logo of Buyer.➤ Additional Provision of Gasket (O-Ring) 6 mm Dia & SS Nut Bolts with Washer to make Water Tight (Optional) .



DETAILED DRAWING
KK-FRP COMPOSITE WATER & AIR TIGHT MANHOLE COVER & FRAME
WITH NUT & BOLT FASTENERS & O RING - HEAVY DUTY
CLEAR OPENING 900X900 MM CAP 20T



PLAN



ALL DIMENSIONS IN MM, DIMENSIONAL TOLERANCE +/- 1%.

SECTION AA

CLEAR OPENING (900X900)	A
OUTER COVER SIZE (980X980)	B
OUTER FRAME SIZE (1080X1080)	D
COVER THICKNESS (50)	C
FRAME THICKNESS (80)	E
Approx. Weight 69kg	